

CALL TABLE

Course	Azimuth	Distance
L1	18°01'00"	6.738
L2	18°01'00"	6.738

SIGNATURE OF OWNER

FOR KILLARNEY TRAILS LIMITED
PIDS 75418145 & 75418046 - DEED/TRANSFER 30683628 REG. 2011-10-04

FOR HILLS BROS REALTY AND INVESTMENTS LTD.
PID 75403972 - DEED 319470 BOOK 1234 PAGE 86 REG. 1989-02-15

KAAJAL AMBWANI VIRENDER KUMAR AMBWANI
PID 75403980 - DEED/TRANSFER 30590021 REG. 2011-09-13

ROSS ADAM EDMONDSON SHIRLEY MARIE EDMONDSON
PID 75404004 - DEED/TRANSFER 24641095 REG. 2007-10-12

MARK LAWRENCE HOLLERAN TRACY LEE HOLLERAN
PID 75404012 - DEED/TRANSFER 27544817 REG. 2009-08-05

LESLIE FRANCIS CLEMENTS RUTH CLEMENTS
PID 75404046 - DEED/TRANSFER 23193361 REG. 2006-12-08

DALE ALEXANDER FORSTER ELIZABETH JOY FORSTER
PID 75404061 - DEED/TRANSFER 17879595 REG. 2004-02-09

CARMAN JAMES HAMILTON PAMELA JAYNE HAMILTON
PID 75404079 - DEED/TRANSFER 28841287 REG. 2010-06-14

CHRISTIE LEANNE LAWRENCE DARREN GEORGE LAWRENCE
PID 75404111 - DEED/TRANSFER 24590557 REG. 2007-10-03

NANCY HELEN FARMER GILBERT JOHN FARMER
PID 75404160 - DEED/TRANSFER 21754354 REG. 2006-02-23

BRIAN JOSEPH BARRY JOAN SAN PASCUAL
PID 75404186 - DEED/TRANSFER 23022222 REG. 2006-11-03

SCOTT HILL CARA EDNA KELLY DERRICK WAYNE HILL
PID 75404491 - DEED/TRANSFER 29689289 REG. 2011-01-13

PURPOSE OF PLAN

THE PURPOSE OF THIS AMENDING PLAN IS TO AMEND Y.C.R.O. PLAN 17781981, REG. 2004-01-20, BY:

1. CHANGING THE SIZE AND SHAPE OF LOT 03-77 BY ADDING A PORTION OF PID 75418145.
2. CHANGING THE SIZE AND SHAPE OF LOTS 03-01, 03-02, 03-04, 03-05, 03-08, 03-10, 03-11, 03-15, 03-20 AND 03-22 BY ADDING A PORTION OF PID 75418046 TO EACH LOT.

APPROVED/APPROUVÉ

DEVELOPMENT OFFICER/
AGENT D'AMÉNAGEMENT
THE CITY OF FREDERICTON

DATE

This approval shall be null and void after twelve months of the date of the Development Officer's approval if plan has not in the meantime been filed in the Registry Office.

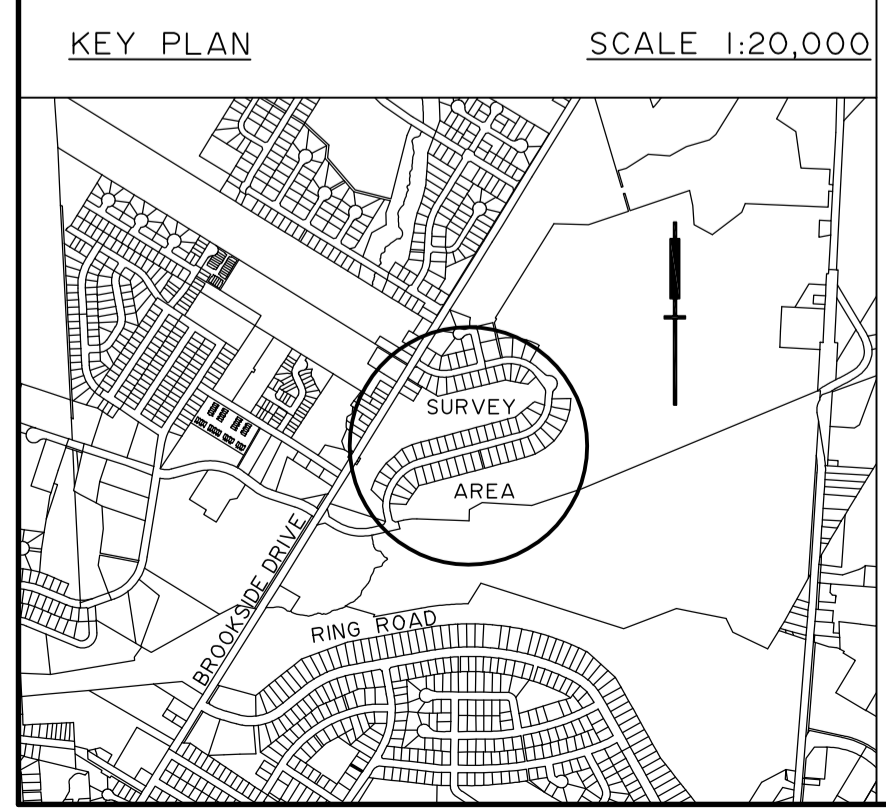


TABLE OF N.B. CO-ORDINATE VALUES
THE COORDINATE VALUES LISTED ARE NAD83 (CSRS)

Point	Easting	Northing	Description	Point	Easting	Northing	Description
224	2488647.734	7443748.406	LOT CORNER	420	2488928.725	7443901.297	LOT CORNER
225	2488722.123	7443744.334	RADIUS POINT	421	2488949.988	7443906.945	LOT CORNER
226	2488762.720	7443738.217	RADIUS POINT	422	2489068.433	7443882.176	LOT CORNER
227	2488630.143	7443754.127	LOT CORNER	423	2489093.812	7443904.055	LOT CORNER
229	2488653.359	7443773.782	LOT CORNER	426	2489030.787	7443935.458	LOT CORNER
232	2488636.242	7443779.349	LOT CORNER	427	2489046.664	7443949.144	LOT CORNER
235	2488634.158	7443772.942	LOT CORNER	428	2489059.628	7443963.616	LOT CORNER
239	2488651.275	7443767.375	LOT CORNER	430	2489114.537	7443930.384	LOT CORNER
399	2488967.889	7444024.480	RADIUS POINT	431	2489129.837	7443960.194	LOT CORNER
400	2488725.590	7443744.148	LOT CORNER	433	2489069.199	7443984.264	LOT CORNER
402	2488745.928	7443773.457	LOT CORNER	435	2488776.021	7443860.734	LOT CORNER
403	2488753.427	7443775.449	LOT CORNER	436	2488797.283	7443866.382	LOT CORNER
404	2488733.197	7443849.359	LOT CORNER	439	2488795.766	7443786.695	LOT CORNER
405	2488712.763	7443841.796	LOT CORNER	440	2488816.955	7443792.324	LOT CORNER
406	2488683.612	7443821.682	LOT CORNER	450	2488861.071	7443883.326	LOT CORNER
407	2488719.051	7443783.345	LOT CORNER	452	2488980.743	7443809.268	LOT CORNER
408	2488725.069	7443795.466	LOT CORNER	503	2488684.209	7443736.543	LOT CORNER
409	2488838.218	7443797.972	LOT CORNER	509	2488709.173	7443772.543	LOT CORNER
410	2488859.481	7443803.620	LOT CORNER	510	2488665.906	7443800.279	LOT CORNER
411	2488839.809	7443876.878	LOT CORNER	530	2488699.970	7443759.271	LOT CORNER
412	2488818.546	7443872.030	LOT CORNER	550	2488641.827	7443793.655	LOT CORNER
415	2488947.112	7443832.078	LOT CORNER	560	2488608.195	7443809.080	LOT CORNER
416	2488954.448	7443834.953	LOT CORNER	561	2488598.596	7443784.507	LOT CORNER
417	2488968.217	7443838.320	LOT CORNER	562	2488604.831	7443762.360	LOT CORNER

LEGEND

STANDARD SURVEY MARKER FOUND
STANDARD SURVEY MARKER PLACED
IRON PIPE FOUND
ROUND IRON BAR FOUND
SQUARE IRON BAR FOUND
WOODEN SURVEYORS POST
HECTARE
SURVEY SYSTEM COORDINATE MONUMENT
BOUNDARIES DEALT WITH BY THIS PLAN
UTILITY POLE
TABULATED COORDINATE VALUE
CMB PARCEL IDENTIFIER
COUNTY REGISTRY OFFICE
EASEMENT
CALCULATED POINT
DEED TRACT LINE

NOTES

1. AZIMUTHS ROUNDED TO NEAREST 10 SECONDS.
2. ALL DIMENSIONS ARE EXPRESSED IN METRES AND DECIMALS THEREOF AND MAY BE CONVERTED TO FEET BY DIVIDING BY 0.3048.
3. ALL DISTANCES AND DIRECTIONS ARE CALCULATED UNLESS NOTED OTHERWISE.
4. AZIMUTHS ARE N.B. GRID NORTH DERIVED FROM GLOBAL POSITIONING.
5. COMBINED SCALE FACTOR OF 1.0000 APPLIED.
6. SURVEY MARKERS WERE FOUND OR PLACED AT ALL LOT CORNERS.

SURVEYOR'S CERTIFICATE

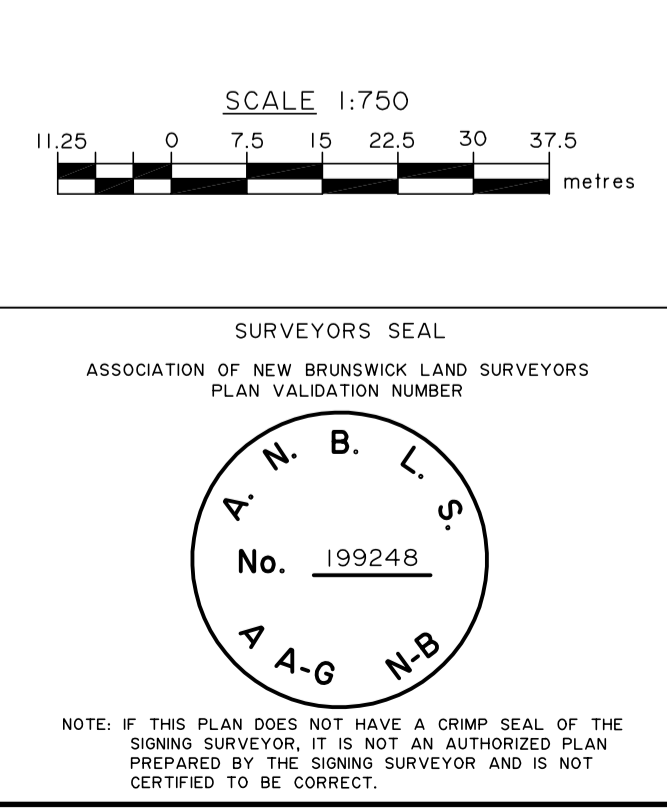
CERTIFICATION IS NOT MADE AS TO LEGAL TITLE, BEING THE DOMAIN OF A LAWYER, NOR TO THE ZONING BYLAWS OR REGULATIONS BEING THE DOMAIN OF A DEVELOPMENT OFFICER.

I, JOHN L. PRIME, DO HEREBY CERTIFY THAT THE INFORMATION SHOWN FOR THE BOUNDARIES BEING DEALT WITH ON THIS PLAN IS TRUE AND CORRECT TO THE BEST OF MY KNOWLEDGE AND BELIEF AND THAT I HAVE SATISFIED THE REQUIREMENTS OF THE SURVEYS ACT.

SURVEYED BY JOHN L. PRIME
N.B.L.S. #358, P.Eng.

JANUARY 20, 2014
DATE SURVEYED

JANUARY 23, 2014
DATE DRAWN



TENTATIVE AMENDING SUBDIVISION PLAN

HILL BROS. REALTY & INVESTMENTS LTD.
WEST HILLS
PHASE I - SECTION 2

SUMMERHILL ROW
CITY OF FREDERICTON
COUNTY OF YORK
PROVINCE OF NEW BRUNSWICK

CONSULTING ENGINEERS & SURVEYORS
SURTEK GROUP LTD.

411-01 St. Mary's Street
Fredericton, NB E3A 8H4
Phone: 454-7044
Fax: 454-1147
Email: Office@SurTek.ca

DRAWING : 13218 FILE No : 13218